

TSX-V: ABM

ABEN

GOLD CORP.



August 2025 | www.abengold.com

Forward Looking Statement

Some of the statements in this document may be deemed to be “forward-looking statements”. All statements in this document, other than statements of historical facts, that address events or developments that management of the Company expects, are forward-looking statements. Although reasonable assumptions, such statements are not guarantees of future performance and actual results or developments may differ materially from those in the forward-looking statements. The Company undertakes no obligation to update these forward-looking statements if management’s beliefs, estimates or opinions, or other factors, should change. Factors that could cause actual results to differ materially from those in the forward-looking statements, include market prices, exploration and development successes, continued availability of capital and financing, and general economic, market or business conditions. Please see the public filings of the Company at www.sedar.com for further information.

Cornell McDowell, P.Geo Qualified Person (QP)

Aben’s Vice President of Exploration is the Qualified Person as defined by National Instrument 43-101 and has reviewed and approved the technical information in this presentation.

Capital Structure

FUNDING ROUNDS

Post Consolidation Round May 2023	\$500,000 raised 5,000,000 shares issued \$0.10 common \$0.15 warrant (4 year)
--------------------------------------	--

Convertible Debenture January 2024	\$300,000 raised 3,000,000 shares issued* \$0.10 common \$0.15 warrant (3 year)
---------------------------------------	---

Claims Sale to Teck August 2024	\$200,000 raised 0 shares issued
------------------------------------	-------------------------------------

January 2025	\$315,000 4,500,000 shares issued \$0.07 \$0.10 warrant (2 year)
--------------	--

*2-year maturity date with interest rate at 12% per annum

SHARE STRUCTURE

On July 31, 2025

Shares Outstanding	23.2 Million
--------------------	--------------

Full Diluted Shares	27.7 Million
---------------------	--------------

Recent Share Price	CAD \$0.07
--------------------	------------

Market Capitalization	CAD \$1.6 Million
-----------------------	-------------------



ABM



ABNAF



R26

Diversified Exploration |
Modern Exploration in World-Class Canadian Mining Districts

People

Region

Opportunity



Management & Directors

- ▶ **Riley Trimble**

Director, President & CEO

- ▶ **James G. Pettit**

Director, Chairman

- ▶ **Timothy Termuende** P.Geo.

Director

- ▶ **Cornell McDowell** P.Geo.

Vice President of Exploration, QP

- ▶ **Don Huston**

Director

EXPERIENCED LEADERSHIP

Burns Block

Mr. Pettit | Successfully led and sold the high-grade gold discovery in Ontario to New Gold in 2014.

Copper Canyon

Mr. Termuende | Golden Triangle high-grade copper discovery, successfully sold to NovaGold in 2011.

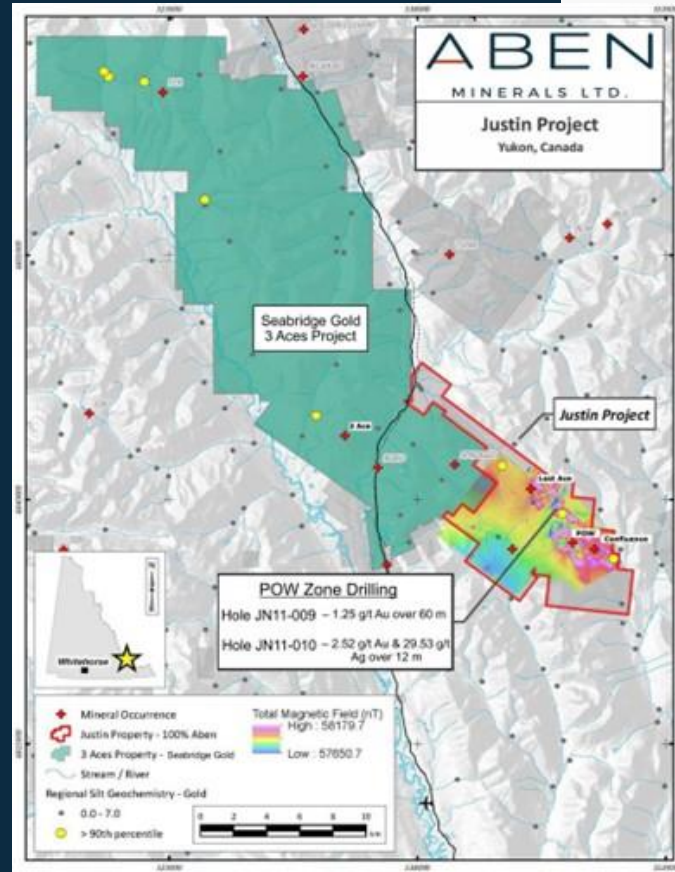
Opportunity

01

Justin

YUKON TERRITORY





Aben's flagship Yukon property has the potential to host both high-grade and bulk-tonnage gold zones within three different styles of mineralization.

18,314 ACRES

- ▶ 100% Ownership
- ▶ Located southeast Yukon
- ▶ Adjacent to Seabridge Gold's 3 Aces Project

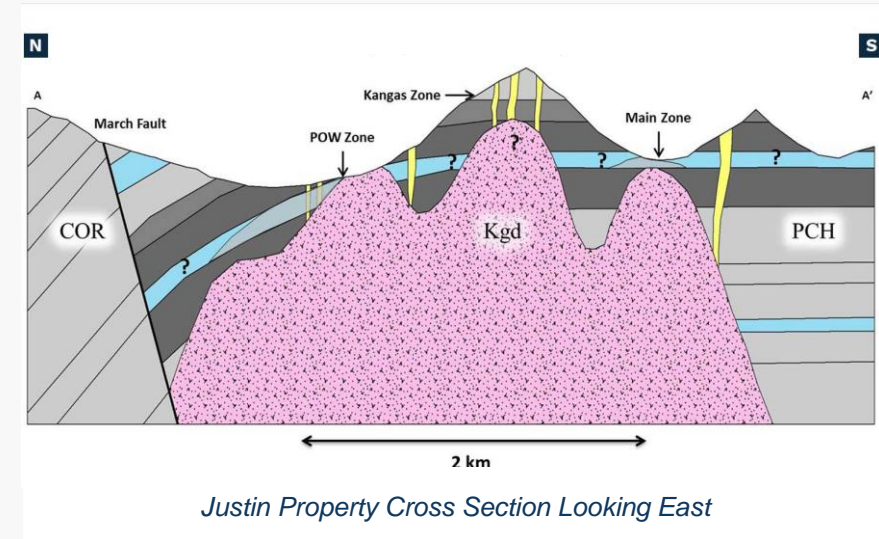
4,000 METRES OF DRILLING

- ▶ 19 drill holes total
- ▶ 10 holes successfully intersecting gold mineralization

Project Mineralization

Wide-spread mineralization across a trending anomaly measuring 3.5 km long and 0.5 km wide encompassing the Confluence, Main, Kangas and POW Zones.

- ▶ POW Zone drilling resulted in greenfields Intrusion related Gold System (IGS) discovery.
- ▶ Proximity of two distinct mineralization styles highlights potential of older orogenic style of mineralization to be incorporated into younger Cretaceous intrusion related mineralization.



High grade gold samples collected within 20 metres from previous 2017 gold grain bulk sample was taken

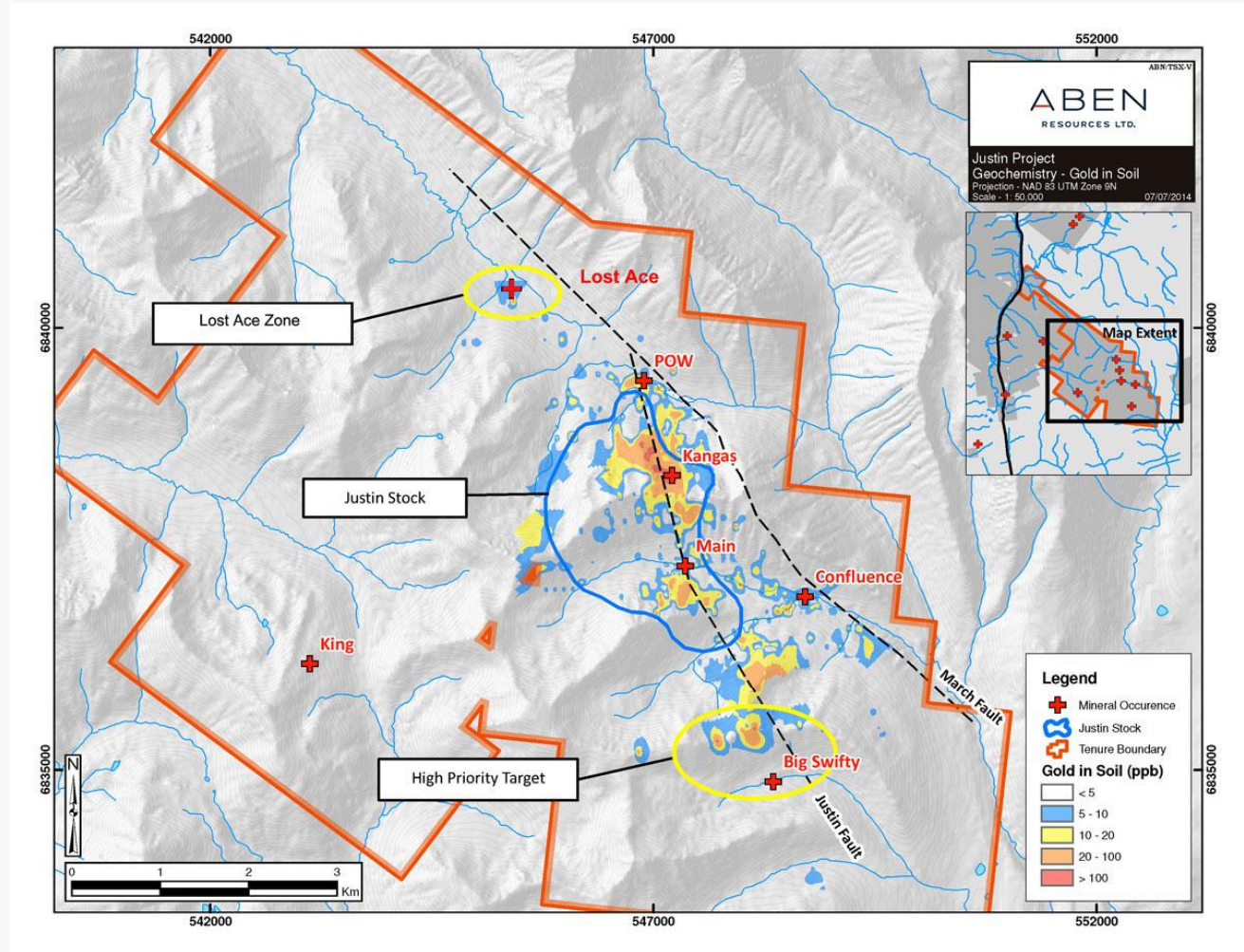
Exploration Highlights

POW Zone

- ▶ JN11009 intercepted 60.00 metres of 1.25 g/t gold including 21.0 metres of 2.47 g/t gold
- ▶ JN11010 intercepted 12 metres of 2.52 g/t gold and 29.53 g/t silver

Lost Ace Zone

- ▶ Channel sampling in 2017 at Lost Ace returned 1.44 g/t Au over 4.4 metres including 4.77 g/t Au over 1 metre

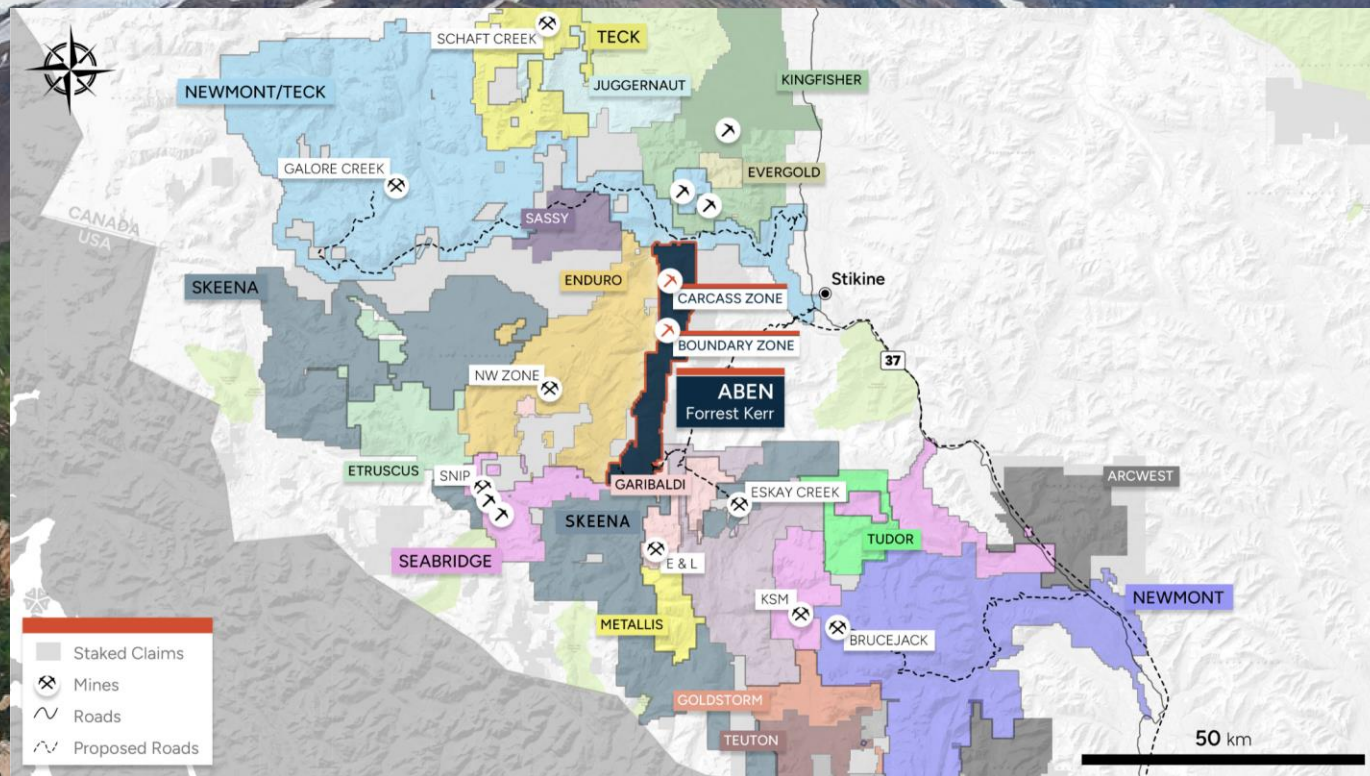


Justin Project Target Zones

02

Forrest Kerr

GOLDEN TRIANGLE, BC

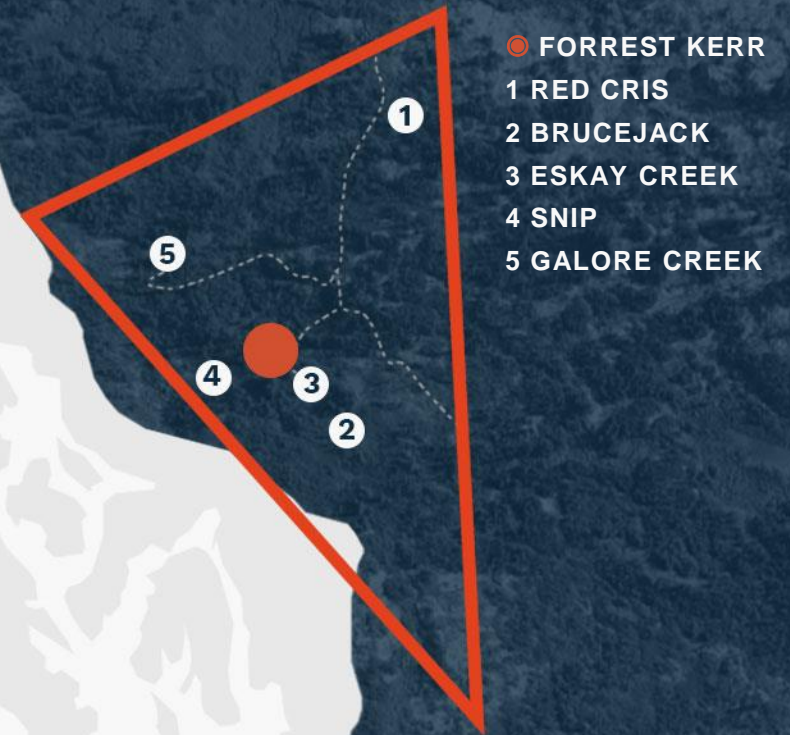


BC's Golden Triangle

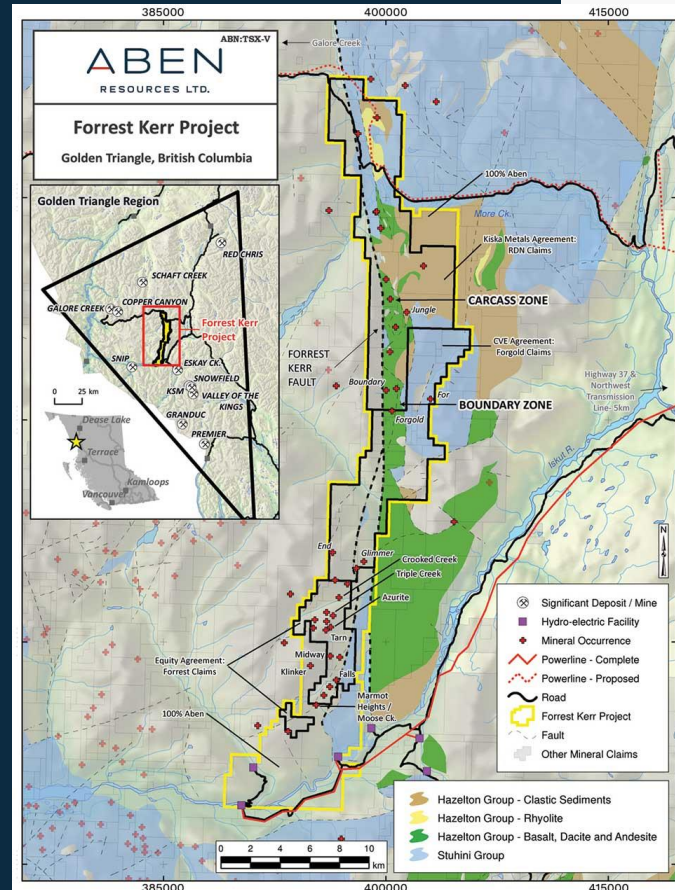
- ▶ Strong Gold Market
- ▶ Historical Success
- ▶ Geological Opportunities
- ▶ New Infrastructure



British Columbia
CANADA



Aben's property, a high-grade gold discovery located in the heart of a world-class gold district.



20,139 HECTARES

- ▶ Direct road access
- ▶ Existing power line infrastructure

30,000 METRES OF HISTORIC DRILLING ON THE PROPERTY

- ▶ 175 drill holes
- ▶ 19,358 soil samples
- ▶ 2,175 rock samples
- ▶ 500 slit samples

NEIGHBOURING SUCCESS

- ▶ GT Gold and Galore Creek to our North
- ▶ Skeena Resource's Snip and Eskay Creek to our South
- ▶ Region is host to many past and producing discoveries

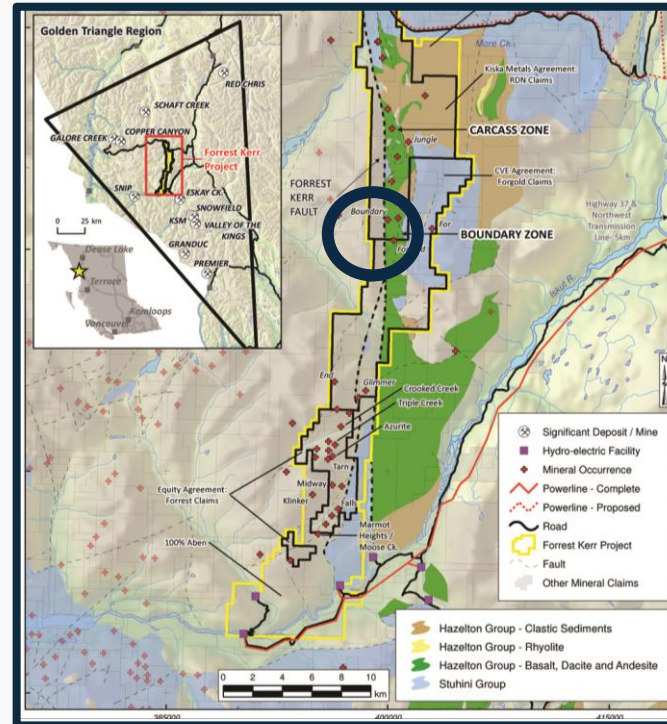
23,000 METRES OF DRILLING SINCE 2017

- ▶ 72 drill holes
- ▶ \$6.6m CAD spent to date

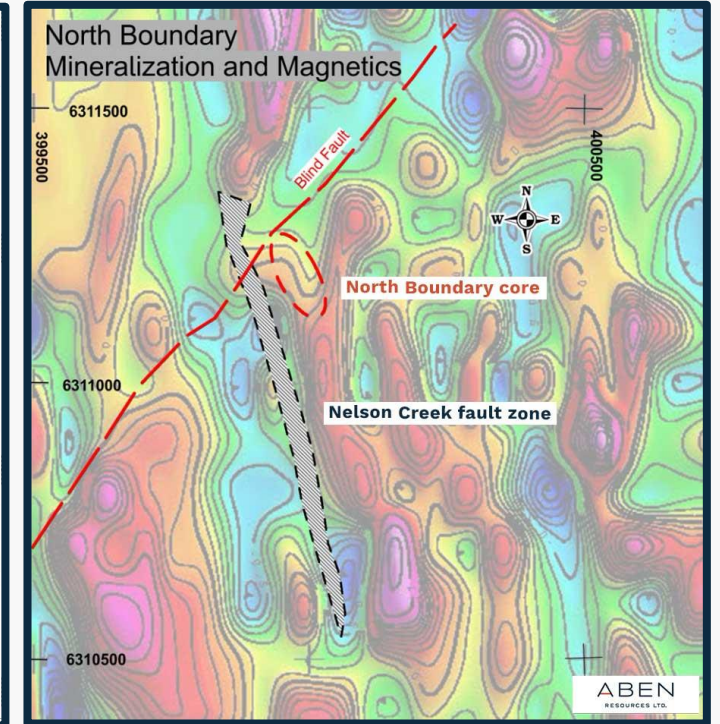
North Boundary

Main mineralized core at North Boundary is outlined within the red dashed ellipse, located at the intersection of the NE directed Blind Fault and the NNW Nelson Creek Fault Zone.

- ▶ Polymetallic mineralization is found at the point of flexure where the dominant north trending lithologies and fault structures have been deflected toward the NE.



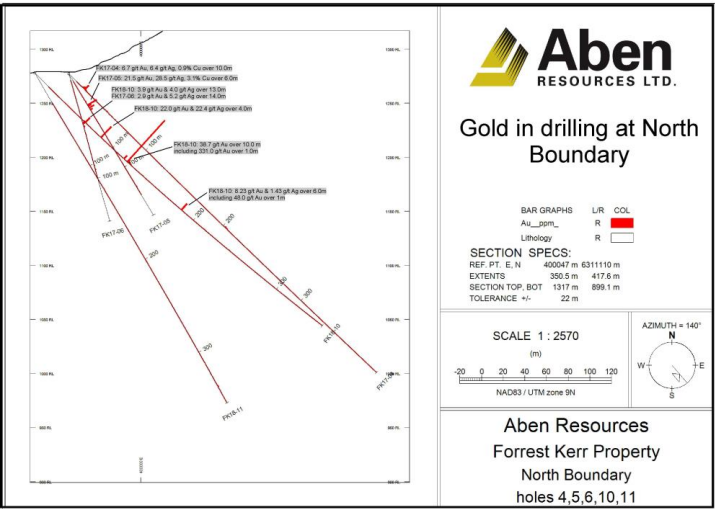
North Boundary Location



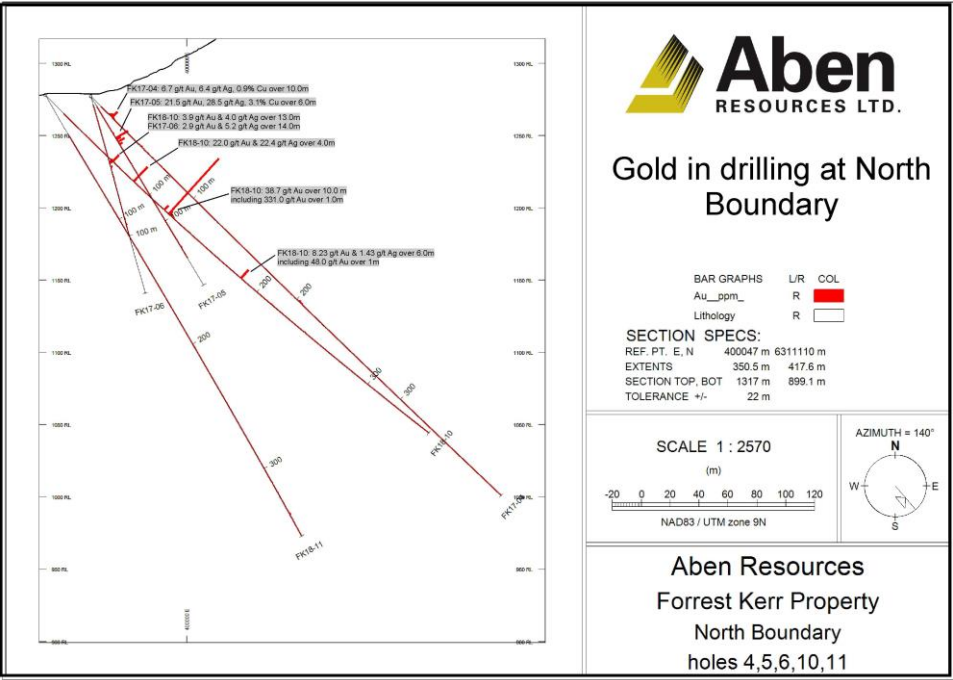
Main Mineralization Core at North Boundary

NORTH BOUNDARY

The strongest gold mineralization thus far discovered is along a SE-NW panel of Hazelton rock at the margins of a magnetic high.



Drill Hole	Dip	Depth (m)	From (m)	To (m)	Length (m)	Gold (g/t)	Silver (g/t)	Copper (%)
FK17-04	Entire Hole		10.0	397.0	387.0	0.26	-	-
— Including			16.0	26.0	10.0	6.70	6.36	.90
			10.0	63.0	53.0	1.5	2.0	.23
			18.0	21.0	3.0	18.9	16.6	2.2
			154.0	170.0	16.0	.07	2.1	-
			193.0	207.0	14.0	1.1	2.8	.02
FK17-05	140/-60	152	8.0	130.0	122.0	1.20	1.80	.21
— Including			29.0	67.0	38.0	3.60	5.10	.58
			33.0	45.0	12.0	10.9	14.6	1.50
			33.0	39.0	6.0	21.5	28.5	3.10
FK17-06	140/-75	141.0	6.0	100.0	94.0	0.51	1.03	.10
— Including			46.0	60.0	14.0	2.91	5.20	.60

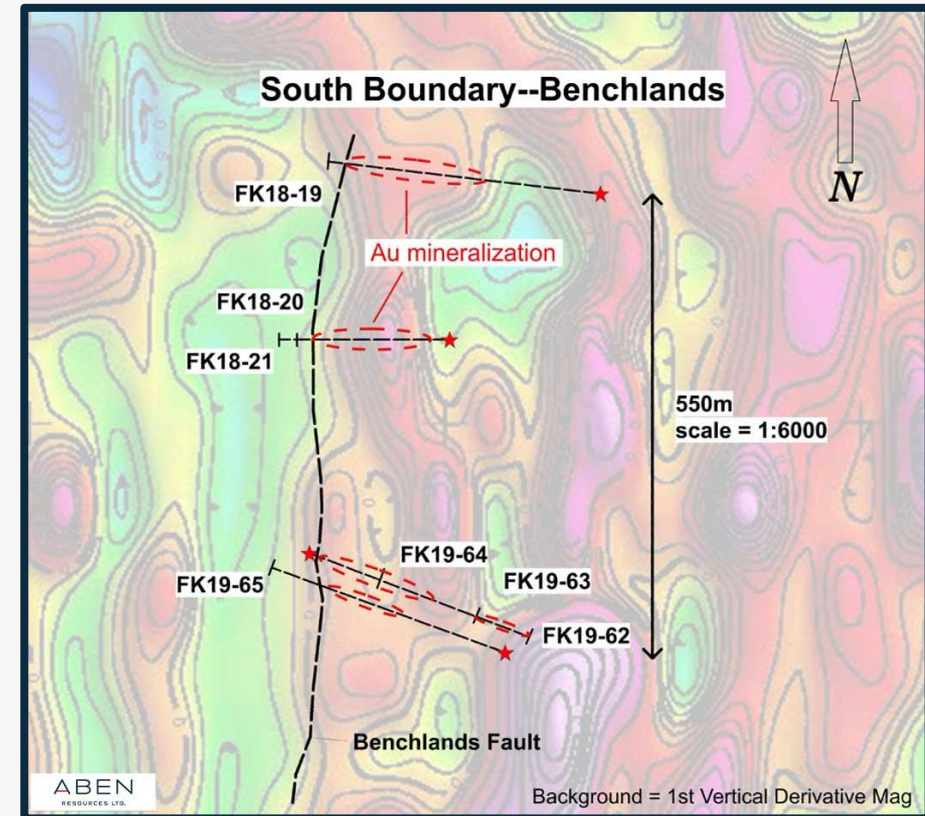


Drill Hole	Dip	Depth (m)	From (m)	To (m)	Length (m)	Gold (g/t)	Silver (g/t)	Copper (ppm)
FK18-10			61.0	74.0	13.0	3.9	4.0	6184
— Including			64.0	65.0	1.0	4.6	6.8	12000
			65.0	66.0	1.0	38.4	35.6	57800
FK18-10			84.0	88.0	4.0	22.0	22.4	1667
— Including			85.0	86.0	1.0	87.3	84.4	4490
FK18-10			114.0	124.0	10.0	38.7	2.9	916
— Including			114.0	120.0	6.0	62.4	4.3	813
			118.0	119.0	1.0	331.0	21.5	1040
FK18-10			183.0	189.0	6.0	8.2	1.4	1066
— Including			185.0	186.0	1.0	48.4	5.5	3900

South Boundary

Gold mineralization defined by drilling over strike length exceeding 500m associated with the Benchlands Fault, which parallels the Forrest Kerr Fault (left side of photo).

- ▶ Benchlands Fault is poorly defined at surface toward the north due to scree cover (may be southern extension of Nelson Creek Fault Zone found at North Boundary).
- ▶ Drilling at South Boundary encountered sediment-hosted rift-related VMS style mineralization within rocks analogous to the Eskay Creek precious metal deposit, located 30 km to the southeast of Forrest Kerr






Benchlands Fault parallels the Forrest Kerr Fault

INVESTOR QUESTIONS

Riley Trimble

President & CEO

 **Telephone** 604-639-3852
 **Toll Free** 1-800-567-8181
 **Email** rtrimble@abengold.com

Head Office

*Suite 1030 – 505 Burrard Street
Vancouver, British Columbia
Canada, V7X 1M5*

